

ISSN 2310-6697

toiser—open transactions on independent scientific-engineering research

# FUNKTECHNIKPLUS # JOURNAL

Théorie—Expérimentation—Métrologie—Logiciel—Applications

ISSUE 4 – SATURDAY 31 MAY 2014 – YEAR 1

REPRINT

## **Interfaces in High Voltage Engineering: A Most Important Question for Conventional Solid Insulating Materials as well as for Nanocomposite Polymers**

M.G. Danikas, R. Sarathi



*This small European Journal is  
In the Defense of Honesty in Science and Ethics in Engineering*

**Publisher** – otoiser—open transactions on independent scientific engineering research, [www.otoiser.org](http://www.otoiser.org)—[info@otoiser.org](mailto:info@otoiser.org), Hauptstraße 52, 2831 Scheiblingkirchen, Austria

**Language** – We declare the origins of the Journal by using in the cover page English, German and French, as well as, a Hellenic vignette. However, since we recognize the dominance of US English in the technical literature, we adopted it as the Journal's language, although it is not our native language.

**Focus** – We consider Radio–FUNK, which still creates a vivid impression of the untouchable, and its Technology–TECHNIK, from an Advanced–PLUS point of view, Plus–PLUS Telecommunications Engineering, Electrical Engineering and Computer Science, that is, we dynamically focus at any related scientific-engineering research regarding Théorie, Expérimentation, Métrologie, Logiciel, ou Applications.

**Scope** – We emphasize this scope broadness by extending the title of the Journal with a Doppelkreuz-Zeichen # which we use as a placeholder for substitution of our Editorial Team disciplines: # Telecommunications etc. as above, or # High Voltage, # Software Engineering, # Simulation etc. as below.

**Frequency** – We publish 3 issues per year: on 31st of January, on 31st of May, and on 30th of September, as well as, an extra issue every 3 papers and a volume every 2 years.

**Editions** – We increase the edition number of an issue only when is needed to reform one or more of its papers—thus to increase their version numbers—but we keep unchanged its 1st edition date shown on its front page and we number its pages sequentially from 1. We count the editions of *About* separately.

**Format** – We use a fixed-space font, hyphenation, justification, unfixed word spacing, and the uncommon for Journals A5 (half A4) page size to achieve WYSIWYG printing and clear reading of 2 to 4 side-by-side pages on wide-screen displays

**Printing-on-Demand** – We can email gratis PDFs at 300-4000 dpi in booklet page scaling of either brochure or book type.

**Copyright** – We publish under a Creative Commons Attribution, CC-BY 3.0 Unported or CC-BY 4.0 International, License only.

Please download the latest *About* edition from  
[about.ftpj.otoiser.org](http://about.ftpj.otoiser.org)

## **Editorial Team**

### **# Electrical Engineering**

# High Voltage Engineering # Insulating Materials  
Professor Michael Danikas, mdanikas@ee.duth.gr  
EECE, Democritus University of Thrace, Greece

# Electrical Machines # Renewable Energies # Electric Vehicles  
Assistant Professor Athanasios Karlis, akarlis@ee.duth.gr  
EECE, Democritus University of Thrace, Greece

### **# Computer Science**

# Computer Engineering # Software Engineering # Cyber Security  
Professor Vasilis Katos, vkatos@bournemouth.ac.uk  
Head of Computer and Informatics Dept, Bournemouth Univ, UK

# Internet Engineering # Learning Management Systems  
Lecturer Sotirios Kontogiannis, skontog@gmail.com  
Business Administration Dept, TEI, Western Macedonia, Greece

# Hypercomputation # Fuzzy Computation # Digital Typography  
Dr. Apostolos Syropoulos, asyropoulos@yahoo.com  
BSc-Physics, MSc-Computer Science, PhD-Computer Science  
Independent Researcher, Xanthi, Greece

### **# Telecommunications Engineering**

# Applied EM Electromagnetics # Applied Mathematics  
Dr. Nikolaos Berketis, nberketis@gmail.com  
BSc-Mathematics, MSc-Applied Maths, PhD-Applied Mathematics  
Independent Researcher, Athens, Greece

# Antennas # Metrology # EM Software # Simulation # Virtual Labs

# Applied EM # Education # FLOSS # Amateur Radio # Electronics  
Dr. Nikolitsa Yannopoulou, yin@arg.op4.eu \*  
Diploma Eng-EE, MEng-Telecom-EECE, PhD-Eng-Antennas-EECE  
Independent Researcher, Scheiblingkirchen, Austria

Dr. Petros Zimourtopoulos, pez@arg.op4.eu \*  
BSc-Physics, MSc-Radio-Electronics, PhD-Antennas-EE  
Independent Researcher, Scheiblingkirchen, Austria

\* Copy & Layout Editing – Proof Reading – Issue & Web Management

## **Technical Support**

Konstantinos Kondylis, kkondylis@gmail.com  
Diploma Eng-EECE, MEng-EECE, Doha, Qatar

Christos Koutsos, ckoutsos@gmail.com  
Diploma Eng-EECE, MEng-EECE, Bratislava, Slovakia

## Information for Authors

This is a small, but independent, low profile Journal, in which we are all—Authors, Reviewers, Readers, and Editors—free at last to be Peers in Knowledge, without suffering from Journal roles or positions, Professional—Amateur—Academic statuses, or established "impact factorizations", under the following guiding principles:

**Authors** – We know what Work means, we respect the Work of the Independent Researcher in Science and Engineering and we want to exhibit his Work. Thus, we decided to found this Free and Open Access Journal in which to publish this Work. Furthermore, as we care indeed for the Work of the technical author—especially a young or a beginner one—we strongly support the publication of his Work, as follows:

- 0 We do not demand from the author to transfer his own copyright to us. Instead, we only consider papers resulting from original research work only, and only if the author can assure us that he owns the copyright of his own paper as well as that he submits to the Journal either an original copy or a revised version of his own paper, for possible publication after review—or even for immediate republication, if this paper has already been published after review—but, in any case under a Creative Commons Attribution, CC-BY 3 Unported or CC-BY 4 International, License, only.
- 1 We encourage the author to submit his own paper written just in Basic English plus Technical Terminology.
- 2 We encourage the author even to select a pen name, which may drop it at any time to reveal his identity.
- 3 We encourage the author to submit an accepted for publication paper, which he was forced to decline that publication because it would be based on a review with unacceptable evaluation or derogatory comments.
- 4 We encourage the author to submit any paper that was rejected after a poor, impotent, inadequate, unreasonable, irresponsible, incompetent, or "just ticking" review.
- 5 We encourage the author to submit an unreviewed paper of his own that he uploaded on some Open Access repository.
- 6 We encourage the author to upload his published papers in our Journal to a truly Free Open repository like viXra.org.
- 7 We provide the author with a decent, express, peer review process, of up to just 4 weeks, by at least 2, either anonymous or onymous, reviewers.

- 8 We provide the author with the option to choose from 2 review processes: the traditional, anonymous, close one, as well as, a contemporary, onymous, open review in our private mailing list for Peer Discussion.
- 9 Under the Clause 0 : We immediately accept for publication a research paper directly resulting from a Project Report, or a Diploma-, Master-, or PhD-thesis, which already the author has successfully defended before a committee of experts, as long as he can mention 2 members of this committee who approved his Work.
- 10 Under the Clause 0 : We immediately accept for publication any paper which is not Openly Accessible on the Internet.
- 11 We immediately publish online a paper, as soon as it is accepted for publication in the Journal.
- 12 We quickly publish an extra issue—that is in excess of the 3 issues we publish a year—as soon as the review process of 3 papers is completed.

**Reviewers** – Every peer may voluntarily become a reviewer of the Journal in his skillfulness for as long as he wishes. In addition, each author of the Journal must review one paper in his expertness for each one of his published papers.

**Readers** – Every reader is a potential post-reviewer: we welcome comments and post-reviews in our private mailing list for Peer Discussion.

**Editors** – Every editor owns a PhD degree—to objectively prove that he really has the working experience of passing through the dominant publishing system. An editor pre-reviews a paper in order to check its compliance to our guiding principles and to select the appropriate reviewers of it. We can accept for consideration papers only in the expertise areas currently shown in the Editorial Team page, above. However, since we are very willing to amplify and extend the Scope of the Journal, we welcome the volunteer expert, in any related subject, who wants to join the Editorial Team as long as he unreservedly accepts our guiding principles.

### **Electronic Publishing**

We regularly use the Free Libre Open Source Software Libre Office with the Free Liberation Mono font and the Freewares PDFCreator and PDF-Xchange Viewer. We also use, with some basic html code of ours: the Free Open Source Software Open Journal System OJS by the Public Knowledge Project PKP installed in our website, and the Free Open Digital Library of

## *About*

Internet Archive website, where we upload Issues, Paper reprints, *About* documents, and Volumes, in both portrait and landscape orientations, for exceptionally clear online reading with the Free Open Source BookReader.

### **Submissions**

We can consider only papers submitted in a format which is fully compatible with LibreOffice—preferably in odt format.

**Legal Notice** – It is taken for granted that the submitter–correspondent author accepts, without any reservation, the totality of our publication conditions as they are analytically detailed here, in this *About*, as well as, that he also carries, in the case of a paper by multiple authors, the independent will of each one of his coauthors to unreservedly accept all the aforementioned conditions for their paper.

### **Internet Addresses**

**Internet Publishing Website** : ftpj.otoiser.org

**Internet Archive Digital Library** : archive.org/details/@ftpj

**Printing-on-Demand** : pod@ftpj.otoiser.org

**Principal Contact** : principal-contact@ftpj.otoiser.org

**Technical Support** : technical-support@ftpj.otoiser.org

**Editorial Team–Technical Support List** : etts.ftpj.otoiser.org

**Peer Discussion List** : peers.ftpj.otoiser.org

**Submissions** : sub@ftpj.otoiser.org

**Sample Paper Template** : template.ftpj.otoiser.org

### **ARG NfP AoI**

Antennas Research Group

Not-for-Profit Association of Individuals \*

arg.op4.eu – arg@op4.eu

Hauptstraße 52, 2831 Scheiblingkirchen, Austria

\* The Constitution of Greece, Article: 12(3) 2008:

[www.hellenicparliament.gr/en/Vouli-ton-Ellinon/To-Politevma](http://www.hellenicparliament.gr/en/Vouli-ton-Ellinon/To-Politevma)

\* The Hellenic Supreme Court of Civil and Penal Law:

[www.areiospagos.gr/en/](http://www.areiospagos.gr/en/) – Court Rulings:Civil|A1|511|2008

---

*This document is licensed under a Creative Commons Attribution 4.0 International License – <https://creativecommons.org/licenses/by/4.0/>*

# **Interfaces in High Voltage Engineering: A Most Important Question for Conventional Solid Insulating Materials as well as for Nanocomposite Polymers**

M.G. Danikas, R. Sarathi \*

Power Systems Laboratory, Department of Electrical and  
Computer Engineering, Democritus University of Thrace,  
Xanthi, Greece [1]

Department of Electrical Engineering,  
Indian Institute of Technology Madras, Chennai, India [2]

## **Abstract**

Interfaces consist a most important part of conventional insulating systems at high voltages. They are considered to be problem areas which have to be dealt with. Numerous publications have contributed in rendering the mechanisms of interfaces understandable. On the other hand, interfaces in nanocomposite polymers seem to function in an entirely different manner from that in conventional insulating systems. The present paper reviews past work on both the conventional insulations and in nanocomposites. Differences regarding the interfaces are mentioned and discussed. Whereas interfaces in conventional insulating systems are to be avoided, interfaces in nanocomposite polymers seem to be desirable - at least - up to a certain percentage of nanoparticles in the base polymer. Although things are better understood in conventional insulating materials, more work has to be performed in order to clarify several aspects, such as space charges and electrical trees emanating from enclosed cavities. Needless to say that much more work has to be done in nanocomposites w.r.t. their modeling and possible explanations of the surprising performance of interfaces, a performance that deviates strongly from the performance in classical insulating materials.

## **Keywords**

Breakdown, breakdown strength, conventional insulating materials/systems, nanocomposite polymers, partial discharges, electrical treeing/trees

## Introduction

With some sort of exaggeration, a well known professor said once that "the problems of high voltage insulations are problems of interfaces" [1]. Interfaces result when there are two different insulating materials next to each other or when an insulating material meets a conductor. An interface may become, e.g., the source of partial discharges or even the cause for a complete breakdown of an insulating system. When two insulating materials of different dielectric constants have a common interface, then the material with the lowest dielectric constant will undergo the more intense electric stressing [2]. Depending also on other parameters, such stressing may result in a gradual deterioration of the insulating system and consequently in a complete breakdown [3].

In this paper, the questions raised by the existence of interfaces in high-voltage insulating systems are discussed. Interfaces play an important role in determining the robustness of an insulating system, when conventional insulating materials are used. Interfaces play also a vital role in insulating systems with nanocomposite polymers. Their functioning, however, is of another nature.

This short review is by no means exhaustive since the topic of interfaces is a vast one. It is the aim of the authors to give the gist of the problems and questions the researchers may face and to offer some comments. In the context of this paper, the terms "insulating material" and "dielectric material" or simply "dielectric" are sometimes interchanged meaning the same thing.

## Interfaces in Conventional Insulating Materials

Dielectric breakdown in insulating materials depends on electrode configuration, insulating material thickness, electrode materials, presence of microcavities, temperature, pressure, nature and morphology of material under test, type of applied voltage, damage path (surface or volume) [4]. Various dielectric breakdown theories have been put forward [5]-[13]. No matter whether the proposed theory was based on cumulative impact ionization by electrons - creating thus positive space charges which distort the field distribution and weaken the dielectric [5] -, on the notion of "intrinsic breakdown" - according to which a large number of electrons trapped in energy levels due to lattice imperfections can transfer



energy to the lattice vibrations [6]-[8], on the "40 generations avalanche theory" [9], on the importance of space charges which modify the local electric field value [10], on the right assumption that the breakdown is a property of the dielectric material plus its electrode system [11] or on the theory based on the ionizing electrons and the hole traps [12], [13], the fact remains that all the above mentioned phenomena result from electric field intensifications, i.e. from either electrode imperfections or mismatch of dielectric materials. This brings us to the point mentioned in the Introduction of the present paper: that interfaces may create the conditions which may cause electric field intensifications.

The subject of partial discharges (PD) which may ensue because of electric field intensifications and/or because of gas (or foreign particle) inclusions in a solid dielectric material, has been studied by Mason in his fundamental publications [14]-[18]. Having in mind all the above, it is fitting to say that interfaces - created either by a mismatch of dielectric materials or because of intrusion of foreign particles and/or air cavities in the insulating material under

question -, are the problem areas of an insulating system.

As was pointed out quite early [19], interfaces play a most significant role in the discharge and breakdown processes: even if an insulation does not contain any cavities, at a sufficient stress "some event" releases gas with the subsequent formation of a cavity. The cavity is occupied by a gas discharge which increases the rate of gas formation with the subsequent growth of both the cavity size and the discharge intensity. The importance of the differing nature of interfaces was also stressed in another publication, where it was pointed out that damage in internal cavities in polyethylene is little compared to the electrode adjacent cavities of the same dimensions and tested under the same experimental conditions [20]. It is evident that in [20], interfaces between polyethylene and gas were compared with interfaces between polyethylene and electrodes, and the latter were found to be more dangerous and deleterious to the insulating material. On the same lines, Kreuger showed that with PVC-insulated cables, the number of discharges increased with increasing electric stress in the dielectric [21]. In yet

another paper, it was indicated that the nature of internal discharges was greatly affected by the assembly of the electrode system and the adhesion of the insulating tapes [22]. Discharges always start in the electrically weaker insulating material, as was commented in previous works [23]-[25].

Needless to say that phenomena related to PD, such as electrical treeing, are also closely connected to the mismatch of the dielectric constants of insulating materials and/or to the existence of gas cavities in their volume. Earlier papers indicated that the treeing phenomenon in polyethylene cables started from both inner and outer surfaces and also from solid particles and fibres [26]. Pioneering work performed with 15 kV and 22 kV polyethylene insulated cables reported that trees originated from contaminants and cavities, the tendency for tree initiation from a contaminant being probably more affected by the contaminant material than by the size, location or shape of the contaminant [27]. The importance of enclosed cavities in the initiation of trees was also reported more recently [28]. According to Ieda [29], tree propagation can be induced by internal gas discharge in the

tree. It is to be borne in mind that in numerous publications dealing with experimental work, the electrode arrangement that was used was a needle-plane electrode arrangement, indicating again that an electrode arrangement was chosen, with pronounced interfaces, in order to study the treeing phenomenon [30]-[33].

Interfaces which may play a role in determining the breakdown strength of an insulating material need not be only interfaces between insulating material and metal or between insulating material and gas cavity or contaminant. Differing phases may play also a role, as was noted in [34], where the interfacial domain of crystalline and amorphous phases may determine the various properties of semi-crystalline polymers, such as biaxially orientated polypropylene (BOPP). Stressing the importance of interfaces and experimenting with cross-linked polyethylene (XLPE), McKean showed that a considerable improvement in cable breakdown can be achieved by impregnation with silicone oil or diethyleneglycol. Such liquids can impregnate gas microspaces in the main insulation and thus result in an increase of the breakdown strength [35]. Similar observations were also

reported with polypropylene and polyethylene impregnated with suitable dipolar liquids [36].

Interfacial breakdown was studied with various electrode geometries and insulating systems consisting of paper typical for transformers and transformer oil [37]. It was reported that interfacial breakdown will occur if the paper is not carefully dried or if many gaseous micro-porosities are left in or on the paper. In [37], however, it was also noticed that using a carefully prepared paper-oil interface structure, the breakdown does not necessarily take place at the interface. Similar observations were made more recently by using silicone rubber interfaces, where both perpendicular and parallel to the applied electric field were investigated [38].

Conventional paper-oil cable insulation was studied quite early and the problems of interfaces were noted [39]. Alternative insulating systems, based mainly on polymeric materials, were proposed with considerable commercial success [40] - [43]. Modern cables with solid polymeric insulation did not avoid the problems of interfaces, namely those of extrusions of semi-conducting sheaths with the main insula-

tion or the inclusion of microcavities and/or impurities [44], [45]. Extruded cable insulation exposed to wet conditions suffered from electrochemical treeing and impurities greatly deteriorated its electrical performance [46]. Moreover, operating electrical stresses may also cause premature insulation failure in 15 kV polyethylene cables, if combined with unfavorable interface profiles and moisture [47]. Interfaces between polyethylene and small contaminants or microcavities may cause bow-tie trees in polyethylene cables [48].

Interfaces either perpendicular to the applied electric field or parallel to it or at an angle with it were dealt with in [49], where it was noted that such a variety of interfaces may be encountered in applications, such as capacitors, cables and in transformer windings. Composite insulating systems must preserve low dielectric losses. Higher dielectric losses may imply high ionic concentration in a solid/liquid insulating system, i.e. high ionic concentration in the liquid component of such a system [50].

Before concluding this section, it is fitting to mention the composite insulating systems of electrical machi-

nes, which consist mainly of epoxy resin and mica sheets. Previous work done in this context indicated that electrical treeing propagates through the epoxy resin and generally stops at the mica sheets, as mica is harder and electrically stronger than epoxy resin. The importance of such interfaces was reported before using a needle-plane electrode arrangement [51], where experiments were carried out without and with a mica sheet inserted in epoxy resin (Figs. 1 and 2). Evidently electrical trees were propagating more easily in the case of absence of the mica sheet and with much more difficulty with mica sheet.

Simulation work done recently showed that mica sheets prevent electrical trees from reaching the opposite electrode [52]. The purpose of mentioning experimental results regarding the composite system of epoxy resin/mica sheets is to show that the electrical trees propagate through the electrically weaker insulating medium. The simulation results indicate that even the slightest variations of dielectric constant may cause the electrical tree growth. In other words, the simulation data indicate that

local fluctuations of dielectric constant imply local - even microscopically minute - formations of interfaces, which in turn may mean local field intensifications, encouraging thus the growth of electrical trees (Figs. 3 and 4). Such observations w.r.t. the local variations of dielectric constant have also been reported for polyethylene [53], [54].

It is evident from all the above that interfaces in classical insulating systems seem to cause problems (possible dielectric constant mismatch, PD, treeing phenomena and ultimately risk of ultimate insulation failure). Due attention should be paid in choosing the insulating materials for specific applications and to the construction of the composite insulating system. Too many things depend on the quality of the construction of the interfaces [55]-[58], too many things that cannot be ignored. Interfaces in traditional insulating systems are considered as the weak aspects of such systems. Keeping this in mind and without exaggerating, it is not far from the truth if we state that an insulating system is as good as its weakest interfaces.

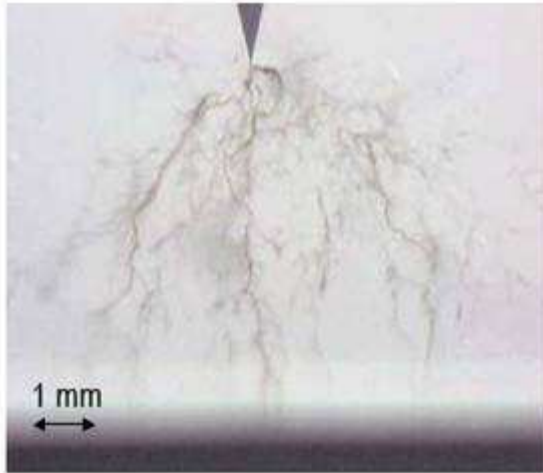


Fig. 1: Electrical tree propagation without the presence of mica sheet (applied voltage 28 kVrms, 50 Hz) (after [51])

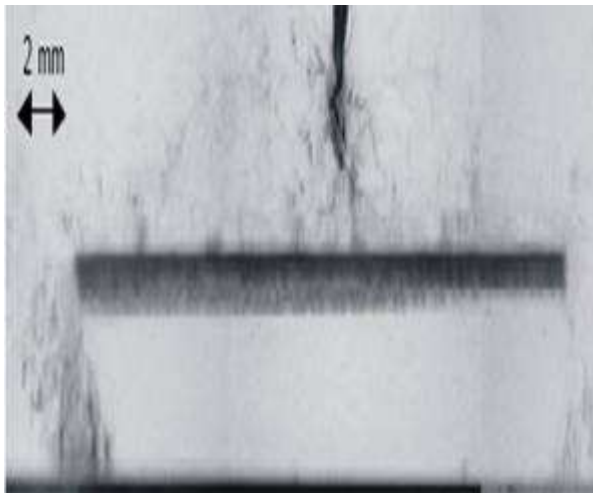


Fig. 2: Electrical tree propagation with the presence of mica sheet. The mica sheet increases the propagation time of the tree (applied voltage 28 kVrms, 50 Hz) (after [51])

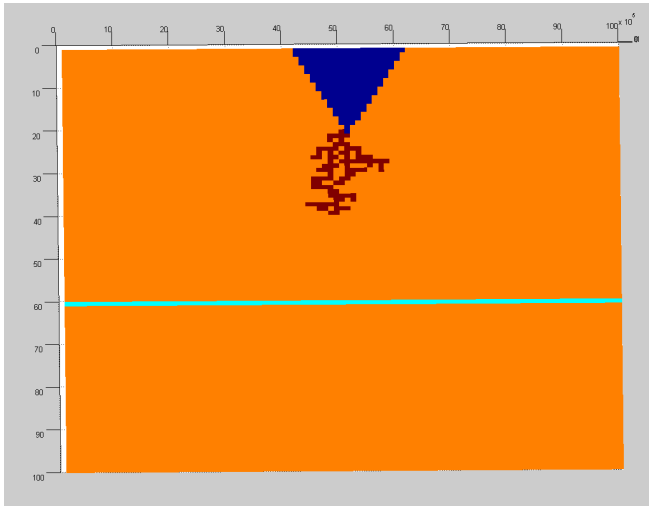


Fig. 3: Simulated electrical tree propagation with one mica sheet. Needle-plane electrode arrangement used

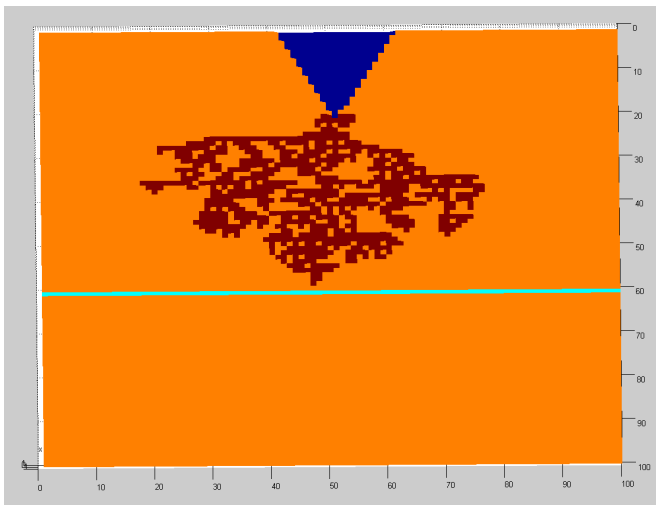


Fig. 4: Further expansion of electrical trees. Electrical trees stop at mica sheet. Needle-plane electrode arrangement used

It goes without say that this short review regarding classical interfaces does not by any means cover the whole subject and variety of solid insulating materials (for example, no mention in this paper was offered about the interfaces in outdoor polymeric insulators [59], [60] or in indoor polymeric insulators [61]). Both in the libraries and in the Internet, the interested reader may find practically tens of thousands of publications referring to the questions and problem areas of the solid insulating materials and insulating systems. What this short review tried to do is to show that interfaces, electric field intensifications, pre - breakdown phenomena (such as PD and electrical trees) and breakdown mechanisms are all interwoven and interrelated. Having said that, the next question related to interfaces, is whether they play the same detrimental role in the new generation of insulating materials, the nanocomposite polymers. This is to be examined in the following section.

### **Interfaces in Nanocomposite Polymers**

More than twenty years ago, nanocomposite polymers came to our lives [62]. The first application of nanocom-

posites appeared in 1990, when Toyota Motor Corporation introduced nanocomposite nylon in their car industry [63]. Since that year, many car industries introduced the use of nanocomposite polymers. Use of nanocomposite polymers was noted in other industries, such as in the optics and the electronics industries as well as in the food industry. A seminal paper by Lewis gave the impetus for research also in the insulation branch [64].

For the electrical insulation, nanocomposite polymers are defined as conventional polymers in which particles smaller than 100 nm are added and dispersed in such a way that at the end one gets a homogeneous mixture [63]. The addition of such nanoparticles (the term "nanofillers" is also widely used) is being done in very small quantities, usually less than 10 wt%. Nanocomposite polymers consist of three components:

- a) the base polymer (or polymer matrix),
- b) the nanoparticles (or nanofillers) and
- c) the interaction zone (or interface zone) between the matrix and the nanoparticles [63].

Regarding the polymers used, these may be either thermoplastics, thermosettings or

elastomers. Nanoparticles may be classified w.r.t. their dimensions, and they can be distinguished as

- 1) mono-dimensional (i.e. extremely thin),
- 2) two-dimensional (nanotubes) and
- 3) three-dimensional (inorganic oxides).

The most usual nanoparticles for the purposes of electrical insulation are

- 1) silica nanoparticles  $\text{SiO}_2$ ,
- 2) montmorillonite nanoparticles (layered silica),
- 3) metallic oxides such as  $\text{Al}_2\text{O}_3$ ,  $\text{TiO}_2$ ,  $\text{MgO}$  and  $\text{ZnO}$  and
- 4) carbon nanotubes.

Nanocomposite polymers can be obtained in two types of structures, namely,

- (i) intercalated nanocomposites (formed when there is limited inclusion of polymer chain between the clay layers with a corresponding small increase in the interlayer spacing of a few nanometers and
- (ii) exfoliated nanocomposites (formed when the clay layers are well separated from one another and individually dispersed in the continuous polymer matrix [65], [66].

As mentioned above, nanoparticles are added and dispersed in relatively small

quantities in the base polymer (usually no more than 10 wt%). Since nanoparticles are smaller than microparticles (smaller by three orders of magnitude), their interaction with the surrounding polymer matrix is much greater [62]. The so-called interaction zone is the main factor contributing in the improvement of the properties of the base polymer [67]. In the case of addition of nanoparticles into a polymer, the interfaces are far more numerous and far larger than in the case of microparticles. As the size of the added particles is reduced, the interface becomes larger and larger. The distance between the nanoparticles is also extremely small. It seems that interfaces determine to a great extent the properties of nanocomposite polymers.

The size of nanoparticles and the distance between them is of the order of magnitude on nanometers. Such particles may interact with the polymer matrix both physically and chemically in the nanometer scale. This has as consequence the appearance of properties that are somehow different from those we already know in a more macroscopic scale [68]. In contradistinction to the interfaces in classical insulating materials, and also to what we know



from classical high voltage textbooks, the improved insulating properties of the nanocomposite polymers are due to

- a) the large surface area of nanoparticles, which creates a large interaction zone,
- b) the changes in polymer morphology because of the large interaction zone,
- c) the changes in the space charge distribution and
- d) a dispersion mechanism [69].

Both the size of the nanoparticles and the chemical properties of their surface play an important role in determining the electrical, thermal and mechanical properties of nanocomposites. Needless to say that the chemical compatibility between the introduced nanoparticles and the polymer matrix is of paramount importance for the general properties of the nanocomposite [70].

One of the most significant characteristics of nanocomposite polymers is the increase of their breakdown strength as the size of the added nanoparticles tends to extremely small values. This increase is not in agreement with the conventional wisdom, which suggests that as the number of interfaces increases, the breakdown strength decreases dramatically

[2], [3]. Nanocomposite polymers seem not to agree with what we already know for classical insulating materials or systems [71]. Differences in breakdown strength between conventional epoxy resin and epoxy resin with nanoparticles was reported in [72]. Such observations were also noted later, when six different materials based on epoxy resin with various with and/or micro- and nanoparticles of alumina/silica were tested. It was shown that epoxy resin with nanosilica particles was the most suitable to obtain high values of breakdown strength [73].

Addition of the percentage of nanoparticles to epoxy resin up to a certain level favors the increase of breakdown strength both with a.c. and d.c. voltage, as was noticed in [74]. Why nanoparticles act in such a favorable way, despite the numerous interfaces they create? The increase of the breakdown strength may be due to

- (i) the increase of the surface area of the interfaces, which somehow alters the behavior of the polymer,
- (ii) the changes of space charge distribution inside the insulation structure,
- (iii) the dispersion mechanism, and
- (iv) the changing properties of the insulating material,

more specifically its volume resistivity, its  $\tan\delta$  and its dielectric constant.

It is possible that the electrons moving in such a nanocomposite polymer, lose their kinetic energy because of the nanoparticles. Since the distances between the nanoparticles are extremely small, the electrons cannot acquire enough speed so that they can contribute to the breakdown process. Consequently, epoxy resin with nanoparticles presents a higher breakdown strength than conventional epoxy resin [74].

Normally the introduction of particles in polymeric materials has as result the introduction of defects and subsequently the worsening of its electrical properties. Nanocomposite polymers seem not to obey the above rule, as the mechanisms of conductivity during the breakdown process are influenced from the applied electric field, the dielectric constant of the nanoparticles and their number. The combined effect of these factors is difficult to fully understand at this stage and we need more work [71]. Similar results were obtained with epoxy resin with nanoparticles of  $\text{TiO}_2$  as it presented a much higher breakdown strength than conventional epoxy resin [75].

On the other hand, electrical treeing propagation was found to be easier in conventional polymers than in nanocomposite polymers [76], [77]. Even a small wt% addition of nanoparticles affects in a positive way the electrical treeing resistance of the nanocomposite polymer. It seems that electrical tree propagation paths go through the base polymer and around the nanoparticles (experimental evidence for this was presented in SEM photographs published in [76]). Consequently, the more the nanoparticles in a polymer, the more difficult the formation of treeing paths. It seems that nanoparticles act as extremely small barriers, thus preventing the easy growth of electrical trees. Electrical trees propagate through the base polymer (in other words through the polymer matrix) and not through the nanoparticles. In some cases the electrical trees stop at the nanoparticles and they do not progress any further. Such observations were made in simulation studies recently [78]-[80].

Further research showed that a small percentage introduction of nanoparticles into a conventional polymer may increase its resistance to electrical treeing [81]. It is interesting to note

that nanoparticles may function as barriers preventing the tree growth even in minute quantities [82]. Earlier work indicated that as soon as the electrical tree touches the nanoparticle, the physico-chemical properties of it are such that very high energies are required in order to cause its deterioration [83]. Although the latter paper is an old one, it may give a clue as to why nanoparticles act as elementary barriers and why they prevent (or they delay) electrical treeing. More recently, a similar argument was given by some Japanese researchers [84].

Loading (i.e. the percentage of included nanoparticles expressed in wt%) plays also a vital role in determining the resistance to electrical treeing. More loading (i.e. more nanoparticles, that is more interfaces) implies a better resistance to treeing. This is probably because trees interact with many more nanoparticles and this delays their growth [85]. Another possible explanation was offered some years ago, where the authors proposed that in front of a tree a damage process zone is formed in a conventional polymer. Such a zone cannot progress easily when it meets nanoparticles [86]. Simulation data indi-

cated that loading affects the tree growth. The nanoparticle size plays also a role in delaying tree propagation, smaller nanoparticles offer a better tree resistance than the larger ones [79]. In Figs. 5-8 simulation results regarding the loading of nanoparticles as well as the size of nanoparticles are shown. It is evident that more loading makes tree growth more difficult. It goes also without say that smaller nanoparticles offer a better resistance to tree propagation.

There is no need to emphasize that there is also in the field of nanocomposite polymers a vast body of technical literature, too vast to be mentioned here in the context of this paper. From this short review it is obvious that interfaces in nanocomposites play an entirely different role from the one they play in classical insulating materials. Why is this so? This may be because the physics and/or chemistry somehow change in the nanoscopic world of such materials. Interfaces become highly desirable - at least up to a certain percentage of added nanoparticles. The surface area of the nanoparticles is huge if compared with that of microparticles for other high voltage applications.

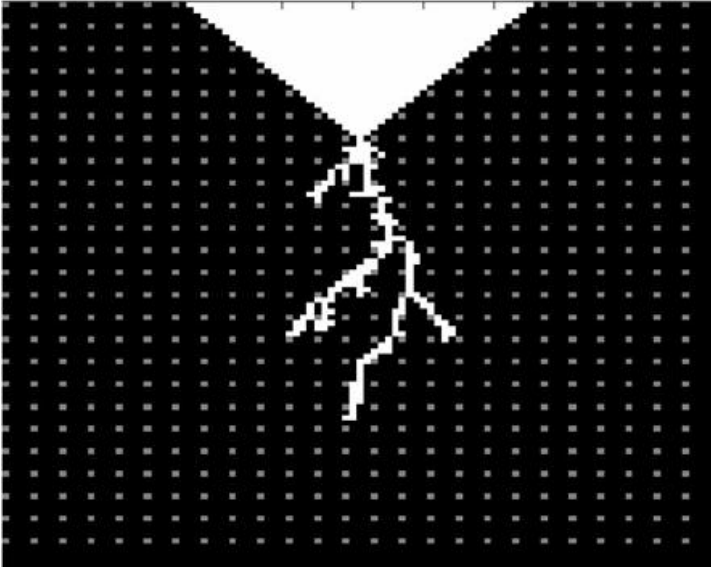


Fig. 5: Simulation with epoxy resin filled with  $\text{TiO}_2$  nanoparticles (loading of 2 wt%, nanoparticle diameter 100 nm)

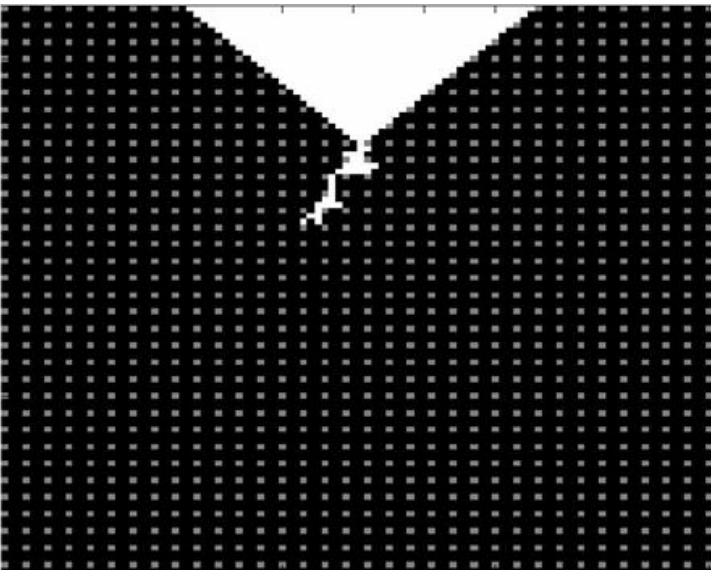


Fig. 6: Simulation with epoxy resin filled with  $\text{TiO}_2$  nanoparticles (loading of 6 wt%, nanoparticle diameter 100 nm)

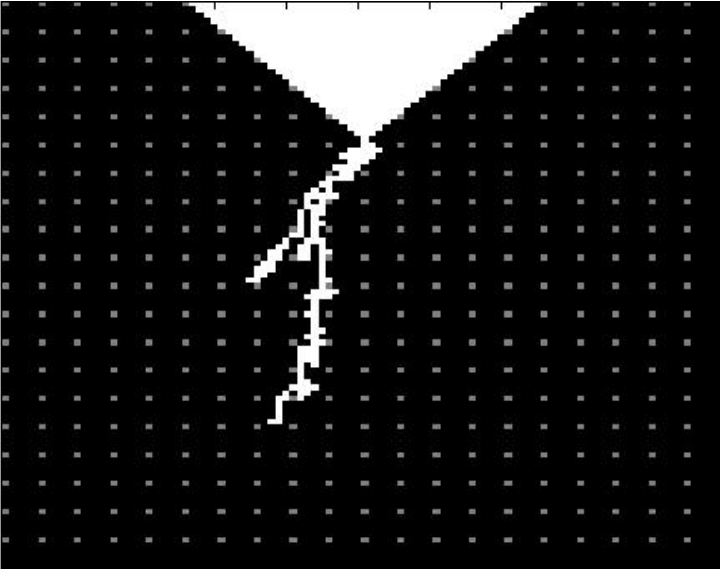


Fig. 7: Simulation with epoxy resin filled with  $\text{TiO}_2$  nanoparticles (loading of 6 wt%, nanoparticle diameter 200 nm)

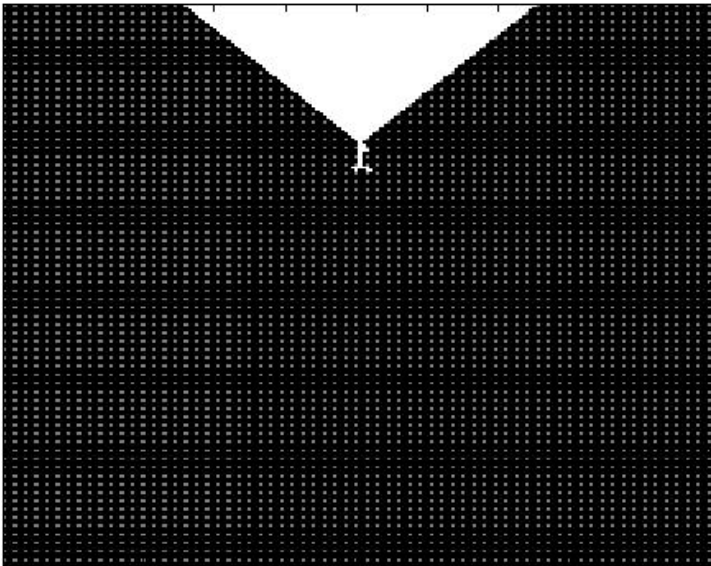


Fig. 8: Simulation with epoxy resin filled with  $\text{TiO}_2$  nanoparticles (loading of 6 wt%, nanoparticle diameter 100 nm)

Models regarding the explanation of the functioning of nanocomposites were proposed as well as how the nanoparticles behave inside the base polymeric material [62], [87], [88]. Such models try to explain the higher breakdown strength values of nanocomposites and also their higher resistance to electrical treeing. The explanations seem to be plausible but more hard evidence is needed. Such evidence will be offered by many more photographs (SEM and TEM photos) showing in detail how the electrical trees circumvent the nanoparticles and how they propagate through the polymer matrix. Such photographs are very difficult to obtain.

Where all this leaves us? How can we understand in a unified way interfaces in both classical and nanocomposite insulating systems? Can the experimental results and simulations on electrical treeing with typical machine insulation ([52]) provide a hint also for a possible explanation in the nanoscopic world? A recent paper on interfaces posed some pertinent questions regarding classical and nanocomposite insulating materials [89]. From this paper it is obvious that although more questions are in need of an answer for the nanocomposites, the subject of

interfaces in classical insulating systems is by no means finished. For example, charging of larger interfaces, such as found in cable joints and terminations, needs to be further explored regarding the mechanisms of space charges. Another aspect in need of further discussion is whether electrical trees may emanate from enclosed cavities in conventional polymers. The latter question has been partly answered in [28], [90] - where some experimental evidence was offered as to the possibility of electrical trees stemming from enclosed cavities - but further experimental data is needed.

One thing that should not be forgotten - and it is common to conventional as well as nanocomposite polymers - is that an insulating system to a great extent is as good as its interfaces. This means that, no matter whether we deal with conventional insulating materials or nanocomposites, preparation and construction in both cases has to be not only careful but meticulous.

A last remark on the literature presented here: the interested reader may find that the authors dwell perhaps too much in the older scientific literature. This is not done because they tend to ignore the more recent re-

search: they simply would like to show that even in the old days, the problems were more or less the same. Moreover, they would also like to show that fundamental ideas - which are with us even today - on the various mechanisms in insulating materials came about quite early.

### Conclusion

This review - by no means exhaustive - tackled the subject of the importance of interfaces both in conventional insulating materials and in nanocomposite polymers. Whereas interfaces are to be avoided in conventional materials, they seem to be a blessing in nanocomposites.

Whereas in conventional materials they cause problems of compatibility and sometimes high field intensifications with all the bad consequences such intensifications entail (i.e. PD, trees), in nanocomposites they seem - up to a certain loading - to be desirable and they prevent (or the delay) tree growth. Whereas in conventional insulating systems the introduction of more interfaces seems to cause sometimes insurmountable problems, the introduction of interfaces (because of the nanoparticles' introduction to the polymer matrix) seems to alleviate electrical trees and to distribute more evenly electric fields and space charges.

### References

- [1] Misikian M., Personal Communication, August 1991
- [2] Kuffel E., Zaengl W.S., Kuffel J., "High Voltage Engineering: Fundamentals", Eds. Newnes, Oxford, UK, 2000
- [3] Kind D., Kaerner H., "High Voltage Insulation Technology", Eds. Vieweg, Braunschweig, Germany, 1985
- [4] Budenstein P., "On the mechanism of dielectric breakdown of solids", IEEE Transactions on Electrical Insulation, Vol. 15, No. 3, 1980, pp. 225-240
- [5] Von Hippel A., "Electric breakdown of solid and liquid insulators", Journal of Applied Physics, Vol. 8, 1937, pp. 815-832
- [6] Froehlich H., "Theory of electrical breakdown in ionic crystals", Proceedings of the Royal Society A, Vol. 160, 1937, pp. 230-241
- [7] Froehlich H., "On the dielectric strength of mixed crystals", Proceedings of the Royal Society A, Vol. 178, 1941, pp. 493-498

- [8] Froehlich H., "On the theory of dielectric breakdown in solids", Proceedings of the Royal Society A, Vol. 188, 1947, pp. 521-532
- [9] Seitz F., "On the theory of electron multiplication in crystals", Physical Review, Vol. 76, 1949, pp. 1376-1393
- [10] Croitotu Z., "Space charges in dielectrics", Progress in Dielectrics, Vol. 6, 1959, pp. 105-146
- [11] O'Dwyer J.J., "Breakdown in solid dielectrics", IEEE Transactions on Electrical Insulation, Vol. 17, No. 6, 1982, pp. 484-487
- [12] Klein N., "Electrical breakdown mechanisms in thin insulators", Thin Solid Films, Vol. 50, 1978, pp. 223-232
- [13] Klein N., "Electrical breakdown of insulators by one-carrier impact ionization", Journal of Applied Physics, Vol. 53, No. 8, 1982, pp. 5828-5839
- [14] Mason J.H., "The deterioration and breakdown of dielectrics resulting from internal discharges", Proceedings of IEE, Vol. 98, Pt. I, 1951, pp. 44-59
- [15] Mason J.H., "Breakdown of insulation by discharges", Proceedings of IEE, Vol. 100 (IIA), 1953, pp. 149-158
- [16] Mason J.H., "Breakdown of solid dielectrics in divergent fields", Proceedings of IEE, Vol. 102, Pt. C, 1955, pp. 254-263
- [17] Mason J.H., "Assessing the resistance of polymers to electrical treeing", Proceedings of IEE, Vol. 128, Pt. A, no. 3, 1981, pp. 193-201
- [18] Mason J.H., "Enhancing the significance of PD measurements", IEEE Transactions on Dielectrics and Electrical Insulation, Vol. 2, No. 5, 1995, pp. 876-888
- [19] Church H.F., Garton C.G., "Some mechanisms of insulation failure", Proceedings of IEE, Vol. 100 (IIA), 1953, pp. 111-120
- [20] Rogers E.C., "The self-extinction of gaseous discharges in cavities in dielectrics", Proceedings of IEE, Vol. 105A, 1958, pp. 621-630
- [21] Kreuger F.H., "Discharge Detection in High Voltage Engineering", Eds. Heywood, London, UK, 1964
- [22] Okamoto H., et al., "Deterioration of insulating materials by internal discharge", IEEE Transactions on Power Apparatus and Systems, Vol. PAS-96, No. 1, 1977, pp. 166-177



- [23] Nikolopoulos P.N., Diamantopoulos D.N., "Behaviour of press-board - oil insulation under alternating voltages of industrial frequency in a non-uniform electric field", Proceedings of IEE, Vol. 130, Pt. A, No. 3, 1983, pp, 145-151
- [24] Danikas M.G., "A study of the behaviour of a uniaxially orientated polyethylene tape/oil insulating system subjected to electrical and thermal stresses", Ph.D. Thesis, University of London, Queen Mary College, UK, 1985
- [25] Kelen A., Danikas M.G., "Evidence and presumption in PD diagnostics", IEEE Transactions on Dielectrics and Electrical Insulation, Vol. 2, No. 5, 1995, pp. 780-795
- [26] Kitchin D.W., Pratt O.S., "Treeing in polyethylene as a prelude to breakdown", AIEE Transactions on Power Apparatus and Systems, Vol. PAS-77, Pt. III, 1958, pp. 180-186
- [27] Vahstrom W.Jr., "Investigation of insulation deterioration in 15 kV and 22 kV polyethylene cables removed from service", IEEE Transactions on Power Apparatus and Systems, Vol. PAS-91, No. 1-3, 1972, pp. 1023-1035
- [28] Danikas M.G., Adamidis G.A, "Partial discharges in epoxy resin voids and the interpretational possibilities and limitations of Pedersen's model", Archiv fuer Elektrotechnik, Vol. 80, No. 2, 1997, pp. 105-110
- [29] Ieda M., "Dielectric breakdown process of polymers", IEEE Transactions on Electrical Insulation, Vol. 15, No. 3, 1980, pp. 206-224
- [30] Laurent C., et al., "Electrical breakdown due to discharges in different types of insulation", IEEE Transactions on Electrical Insulation, Vol. 16, No. 1, 1981, pp. 52-58
- [31] Kao K.C., De Min Tu, "Formation of electrical treeing in polyethylene", Annual Report of Conference on Electrical Insulation and Dielectric Phenomena (CEIDP), Amherst, MA, USA, October 17-21, 1982, pp. 598-603
- [32] El Moslemany M.A., et al., "Some observations on tree patterns in PMMA under alternating voltages", IEEE Transactions on Electrical Insulation, Vol. 17, No. 1, 1982, pp. 76-80
- [33] Tanaka T., Greenwood, "Advanced Power Cable Technology", Eds. CRC Press, Inc., Boca Raton, Florida, 1983
- [34] Umemura T., Couderc D., "Dielectric behaviour of solid/liquid insulation system", IEEE Transactions on Elec-

- trical Insulation, Vol. 17, No. 3, 1982, pp. 276-280
- [35] McKean A.L., "Breakdown mechanism studies in cross-linked polyethylene cable", IEEE Transactions on Power Apparatus and Systems, Vol. PAS-95, No. 1, 1976, pp. 253-260
- [36] Fendley J.J., Parkman N., "Effect of impregnation, compression and temperature on electric strength of polythene and polypropylene", Proceedings of IEE, Vol. 129, Pt. A, No. 2, 1982, pp. 113-118
- [37] Kelley E.F., Hebner R.E., "Electrical breakdown in composite insulating systems: Liquid-solid interface parallel to the field", IEEE Transactions on Electrical Insulation, Vol. 16, No. 4, 1981, pp. 297-303
- [38] Danikas M.G., "On the breakdown strength of silicone rubber", IEEE Transactions on Dielectrics and Electrical Insulation, Vol. 1, No. 6, 1994, pp. 1196-1200
- [39] Gazzana-Priaroggia P., et al, "The influence of ageing on the characteristics of oil-filled cable dielectrics", Proceedings of IEE, Vol. 108A, 1961, pp. 467-479
- [40] Buntin R., et al, "A study of the electrical insulation characteristics of oil impregnated polypropylene paper", IEEE Transactions on Electrical Insulation, Vol. 7, No. 4, 1972, pp. 162-169
- [41] Gibbons J.A.M., Stannett A.W., "Plastics in transmission cables", 2nd International Electrical Insulation Conference, BEAMA, Brighton, UK, May 1974
- [42] Forsyth E., et al., "The development of synthetic insulating tape for EHV cables", IEE 2nd International Conference on Progress in Cables and Overhead Lines For 220 kV and Above, London, UK, September 1979
- [43] Ernst A., Muller A., "The state of development of 100% synthetic tape at Brookhaven National Laboratory", Inf. Rep., BNL-28981, Brookhaven National Laboratory, January 1981
- [44] Yoda B., Muraki K., "Development of EHV cross-linked polyethylene insulated power cables", IEEE Transactions on Power Apparatus and Systems, Vol. PAS-91, 1972, pp. 506-513
- [45] Bahder G., et al., "Electrical and electrochemical treeing effect in polyethylene and crosslinked polyethylene cables", IEEE Transactions on Power Apparatus and Syst., Vol. PAS-93, No. 1-3, 1974, pp. 977-990
- [46] Charoy M.A., Jocteur R. F., "Very high tension cables

- with extruded polyethylene insulation", IEEE Transactions on Power Apparatus and Systems, Vol. PAS-90, No. 2, 1971, pp. 777-782
- [47] Wilkens W.D., "A study of treeing in medium voltage power cables", IEEE Transactions on Power Apparatus and Systems, Vol. PAS-93, No. 4-6, 1974, pp. 1201-1207
- [48] Lyle R., Kirkland J.W., "An accelerated life test for evaluating power cable insulation", IEEE Transactions on Power Apparatus and Systems, Vol. PAS-100, No. 8, 1981, pp. 3764-3770
- [49] Kreuger F.H., "Industrial High Voltage: Electric Fields, Dielectrics, constructions", Eds. Delft University Press, Delft, The Netherlands, 1991
- [50] Parkman N., "Breakdown in composites", pp. 52-69, in the book: "Electrical Insulation", edited by A. Bradwell, Eds. Peter Peregrinus Ltd., London, UK, 1983
- [51] Vogelsang R., Fruth B., Farr T., Froehlich K., "Detection of electrical tree propagation by partial discharge measurements", Proceedings of 15th International Conference on Electrical Machines, Brugge, Belgium, 2002
- [52] Christantoni D.D., Danikas M.G., Vardakis G.E., Lekou A.T., "Simulation of electrical tree growth in a composite insulating system consisted from epoxy resin and mica sheets", International Review on Modeling and Simulation (IREMOS), Vol. 3, No. 2, 2010, pp. 241-249
- [53] Vardakis G.E., Danikas M.G., "Simulation of electrical tree propagation in a solid insulating material containing spherical insulating particle of a different permittivity with the aid of Cellular Automata", Facta Universitatis, Series Electronics and Energetics, Vol. 17, 2004, pp. 377-389
- [54] Vardakis G.E., Danikas M.G., "Simulation of electrical tree propagation using Cellular Automata: The case of conducting particle included in a dielectric in point-plane electrode arrangement", Journal of Electrostatics, Vol. 63, 2005, pp. 129-142
- [55] Benken H.-G., "Ueber die elektrische Festigkeit von Fugen zwischen festen' Isolierstoffen", Elektrotechnische Zeitschrift (ETZ-A), Vol. 89, 1968, pp. 356-361
- [56] Benken H.-G., "Ueber die elektrische Festigkeit von Fugen zwischen festen' Isolierstoffen", Ph.D. Thesis, Technische Universitaet Braunschweig, 1967
- [57] Kahle M., "Elektrische Isoliertechnik", Eds. VEB Verlag

- Technik, Berlin, Germany, 1988
- [58] Naidu M.S., Kamaraju V., "High Voltage Engineering", Eds. Tata McGraw-Hill Publ. Co. Ltd., New Delhi, India, 2000
- [59] Danikas M.G., "Ageing properties of silicone rubber materials used in high voltage composite insulators", Journal of Electrical and Electronics Engineering, Australia, Vol.15, No. 2, 1995, pp. 193-202
- [60] Danikas M.G., "Polymer outdoor insulators", Acta Electrotechnica Napocensis, Vol. 40, No. 1, 1999, pp. 3-10
- [61] Danikas M.G., "Surface phenomena on resin-type insulators under different electrical and non-electrical stresses in the early stage of ageing", Facta Universitatis, Series Electronics and Energetics, Vol. 13, No. 3, 2000, pp. 335-352
- [62] Nelson J.K., "Dielectric Polymer Nanocomposites", Eds. Springer, Heidelberg, Germany, 2010
- [63] Lau K.Y., Piah M.A.M., "Polymer nanocomposites in high voltage electrical insulation perspective: A review", Malaysian Polymer Journal, Vol. 6, No. 1, 2011, pp. 58-69
- [64] Lewis T.J., "Nanometric dielectrics", IEEE Transactions on Dielectrics and Electrical Insulation, Vol. 1, No. 5, 1994, pp. 812-825
- [65] Alexandre M., Dubois F., "Polymer-layered silicate nanocomposites: Preparation, properties and uses of a new class of materials", Materials Science and Engineering, Vol. 28, 2000, pp. 1-63
- [66] Sahu R.K., "Understanding the electrical, thermal and mechanical properties of epoxy nanocomposites", Ph.D. Thesis, Indian Institute of Technology Madras, Department of Electrical Engineering, Chennai, India, 2007
- [67] Nelson J.K., "The promise of dielectric nanocomposites", Conference Record of 2006 IEEE International Symposium on Electrical Insulation, pp. 452-457
- [68] Tanaka T., Montanari G.C., Mulhaupt R., "Polymer nanocomposites as dielectrics and electrical insulation - Perspectives for processing technologies, material characterization and future applications", IEEE Transactions on Dielectrics and Electrical Insulation, Vol. 11, No. 5, 2004, pp. 763-784
- [69] Roy M., Nelson J.K., McCrone R.K., Schaldler L.S., Reed C.W., Keefe R., Zenger W., "Polymer nanocomposite dielectrics - The role of the interface", IEEE Transa-

- ctions on Dielectrics and Electrical Insulation, Vol. 12, No. 4, 2005, pp. 629-643
- [70] Roy M., Nelson J.K., McCrone R.K., Schaldler L.S., "Candidate mechanisms controlling the electrical characteristics of silica/XLPE nanodielectrics", Journal of Materials Science, Vol. 42, No. 11, 2007, "[http://homepages.rpi.edu/~nelsoj/JMS\\_Paper\\_07.pdf](http://homepages.rpi.edu/~nelsoj/JMS_Paper_07.pdf)"
- [71] Singha S., Joy Thomas M., "Dielectric properties of epoxy nanocomposites", IEEE Transactions on Dielectrics and Electrical Insulation, Vol. 15, No. 1, 2008, pp. 12-23
- [72] Tanaka T., "Dielectric nanocomposites with insulating properties", IEEE Transactions on Dielectrics and Electrical Insulation, Vol. 12, No. 5, 2005, pp. 914-928
- [73] Okazaki Y., Kozako M., Hikita M., Tanaka T., "Effects of addition of nano-scale alumina and silica fillers on thermal conductivity and dielectric strength of epoxy/alumina microcomposites", Proceedings of 2010 IEEE International Conference on Solid Dielectrics, Potsdam, Germany, July 4-9, 2010, pp. 279-282
- [74] Sarathi R., Sahu R.K., Rajeshkumar P., "Understanding the thermal, mechanical and electrical properties of epoxy nanocomposites", Journal of Materials Science and Engineering: A, Vol. 445-446, 2007, pp. 567-578
- [75] Imai T., Sawa F., Ozaki T., Inoue Y., Shimizu T., Tanaka T., "Comparison of insulation breakdown properties of epoxy nanocomposites under homogeneous and divergent electric fields", 2006 Annual Report of Conference on Electrical Insulation and Dielectric Phenomena, Kansas City, USA, October 25-18, 2006, pp. 306-309.
- [76] Danikas M.G., Tanaka T., "Nanocomposites - A review of electrical treeing and breakdown", IEEE Electrical Insulation Magazine, Vol. 25, No. 4, 2009, pp. 19-25
- [77] Alapati S., Joy Thomas M., "Electrical treeing in polymer nanocomposites", Proceedings of 15th National Power Systems Conference (NPSC), IIT Bombay, India, December 2008, pp. 351-355
- [78] Pitsa D., Vardakis G., Danikas M.G., Kozako M., "Electrical treeing propagation in nanocomposites and the role of nanofillers: Simulation with the aid of Cellular Automata", Journal of Electrical Engineering, Vol. 61, No. 2, 2010, pp. 125-128

- [79] Pitsa D., Danikas M.G., "A 2D Cellular Automata model for tree propagation in nanocomposites: Influence of nanoparticles size, loading and the presence of microvoids", *NANO: Brief Reports and Reviews*, Vol. 8, No. 1, 2013 (DOI: 10.1142/S1793292013500021)
- [80] Pitsa D., Danikas M.G., "Modeling relative permittivity and electrical treeing in polymer nanocomposites", *Proceedings of 2013 IEEE International Conference on Solid Dielectrics*, Bologna, Italy, June 30 - July 4, 2013, pp. 832-835
- [81] Ding H.-Z., Varlow B.R., "Effect of nano-fillers on electrical treeing in epoxy resin subjected to AC voltage", *2004 Annual Report of Conference on Electrical Insulation and Dielectric Phenomena*, Colorado, USA, 17-20 October, 2004, pp. 332-335
- [82] Tanaka T., Yokoyama K., Ohki Y., Murata Y., Sekiguchi Y., Goshowaki M., "High field light emission in LDPE/MgO nanocomposites", *Proceedings of 2008 International Symposium on Electrical Insulating Materials*, Mie, Japan, September 7-11, 2008, pp. 506-509
- [83] MacKenzie B.T., Prober M., Lever R.C., "Filler effects and treeing phenomena in laboratory models and cable sections", *Annual Report of Conference on Electrical Insulation and Dielectric Phenomena*, 1972, pp. 233-238
- [84] Tanaka T., Matsunawa A., Ohki Y., Kozako M., Kohtoh M., Okabe S., "Treeing phenomena in epoxy/alumina nanocomposite and interpretation by a multi-core model", *IEEE Transactions on Fundamentals and Materials*, Vol. 126, No. 11, 2006, pp. 1128-1135
- [85] Imai T., Sawa F., Ozaki T., Inoue Y., Shimizu T., Tanaka T., "Roles of fillers on properties of nano-TiO<sub>2</sub> and micro-SiO<sub>2</sub> filler mixed composites", *Proceedings of International Conference on Solid Dielectrics*, Winchester, UK, July 8-13, 2007, pp. 407-410
- [86] Ding H.-Z., Varlow B.R., "Thermodynamic model for electrical tree propagation in combined electrical and mechanical stresses", *IEEE Transactions on Dielectrics and Electrical Insulation*, Vol. 12, No. 1, 2005 pp. 81-89
- [87] Danikas M.G., "On two nanocomposite models: Differences, similarities and interpretational possibilities regarding Tsagaropoulos' model and Tanaka's model", *Journal of Electrical Engineering*, Vol. 61, No. 4, 2010, pp. 241-246

- [88] Pitsa D., Danikas M.G., "Interfaces features in polymer nanocomposites: A review of proposed models", NANO: Brief Reports and Reviews, Vol. 6, No. 6, 2011, pp. 497-508
- [89] Morshuis P., "Interfaces: to be avoided or to be treasured?", Proceedings of 2013 IEEE International Conference on Solid Dielectrics, Bologna, Italy, June 30 - July 4, 2013, pp. 1-9
- [90] Danikas M.G., Karlis A.D., "Some observations on the dielectric breakdown and the importance of cavities in insulating materials used for cables and electrical machines", Advances in Electrical and Computer Engineering, Vol. 11, No. 2, 2011, pp. 123-126

**Previous Publication in FUNKTECHNIKPLUS # JOURNAL**

"Experimental Results on the Behavior of Water Droplets on Polymeric Surfaces Under the Influence of Electric Fields: the Case of an Inclined Test Arrangement for PVC, Rubber and Silicone Rubber"  
Issue 2, pp. 19-39

**\* About The Authors**

*Michael Danikas*, Issue 2, p. 39

*Ramanujam Sarathi*, Issue 2, p. 39

[ This Page Intentionally Left Blank ]



[ This Page Intentionally Left Blank ]

[ This Page Intentionally Left Blank ]

[ This Page Intentionally Left Blank ]

In case of any doubt,  
download the genuine papers from  
**[genuine.ftpj.otoiser.org](http://genuine.ftpj.otoiser.org)**

## FRONT COVER VIGNETTE

A faded synthesis of an anthemion rooted in a meandros

The thirteen-leaf is a symbol for a life tree leaf.  
"Herakles and Kerberos", ca. 530–500 BC,  
by Paseas, the Kerberos Painter,  
Museum of Fine Arts, Boston.

[www.mfa.org/collections/object/plate-153852](http://www.mfa.org/collections/object/plate-153852)

The simple meandros is a symbol for eternal immortality.  
"Warrior with a phiale", ca. 480–460 BC,  
by Berliner Maler,  
Museo Archeologico Regionale "Antonio Salinas" di Palermo.

[commons.wikimedia.org/wiki/File:Warrior\\_MAR\\_Palermo\\_NI2134.jpg](https://commons.wikimedia.org/wiki/File:Warrior_MAR_Palermo_NI2134.jpg)